

Backing Up

Avoid Backing Up

Back into a parking space so you can drive out forward. Pick a “drive-through” parking spot you can pull straight into and onto the next row, so that when you depart, you are pulling forward out of your spot instead of backing up.



Check Around Vehicle

Check before backing. Check in front, behind, and both sides before getting into your vehicle.

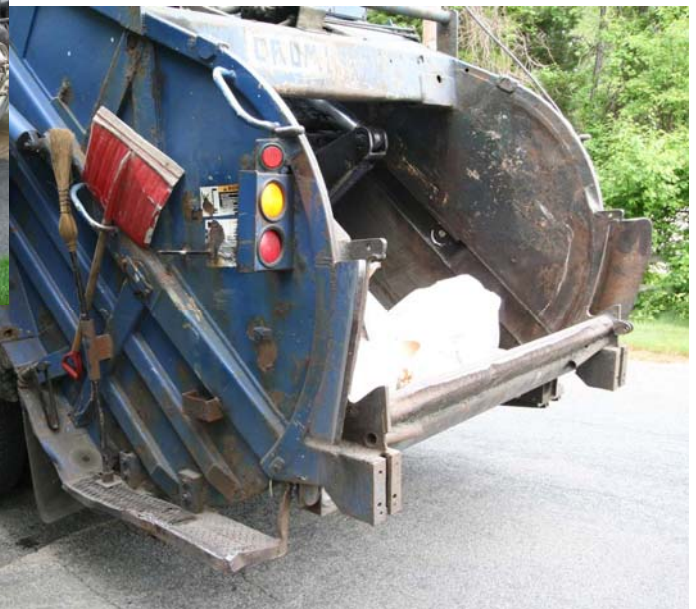


Turn Around & Use All Mirrors

Turn around to look out the rear window, if possible. Don't depend solely on your mirrors. Place right arm on the back of the passenger seat and look over your shoulder.

Back Up Slowly

Back slowly and cautiously. Cover brake pedal with foot. Sound horn twice to alert pedestrians and other drivers.



Utilize A Spotter

Whenever possible, utilize a spotter outside the vehicle to guide the driver while backing. Be sure to know where the spotter is at all times, so you don't back into them.